

# LJUBLJANA EUROPEAN GREEN CAPITAL 2016

Simona Berden  
Ljubljana - European Green Capital 2016 team

LJUBLJANA. *For you.*

[www.greenljubljana.com](http://www.greenljubljana.com)  
[www.ljubljana.si/en](http://www.ljubljana.si/en)



City of  
Ljubljana



The '**European Green Capital**' award is a European Commission initiative under which each year a group of environmental experts and a jury name one city as the European Green Capital.

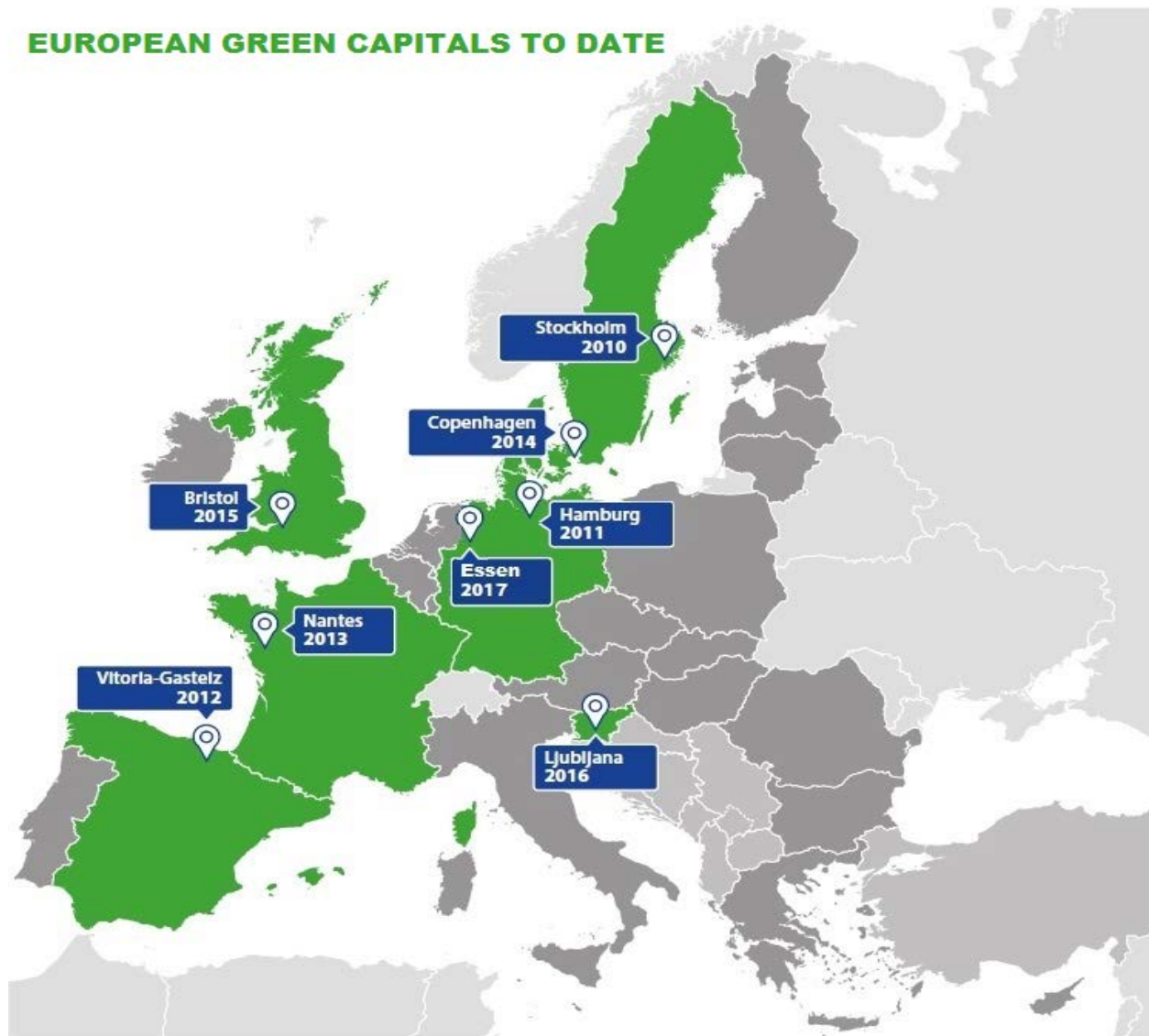
It is bestowed upon the city that has achieved **the highest environmental standards** and is committed to ambitious goals **towards further environmental improvement** and sustainable development.



# 12 INDICATORS OF SUSTAINABLE DEVELOPMENT

1. Climate change,
2. Local transport,
3. Green urban areas incorporating sustainable land use,
4. Nature and biodiversity,
5. Quality of the local ambient air,
6. Quality of the acoustic environment,
7. Waste production and management,
8. Water consumption,
9. Waste water management,
10. Environmental innovation and sustainable employment,
11. Energy efficiency,
12. Environmental management by local authorities.

## EUROPEAN GREEN CAPITALS TO DATE



LJUBLJANA. *For you.*

[www.greenljubljana.com](http://www.greenljubljana.com)  
[www.ljubljana.si/en](http://www.ljubljana.si/en)



City of  
Ljubljana



# INFO POINT



# THEMES IN OUR INFO POINT

- *January:* Waste management
- *February:* Local self-sufficiency
- *March:* Water
- *April:* Acoustic Quality
- *May:* Green Urban Areas
- *June:* Energy
- *July:* Bees and Biodiversity
- *August:* Sustainable Tourism
- *September:* Transport and Air Quality
- *October:* Wood
- *November:* Climate Change
- *December:* Eco innovation and sustainable employment

# INFO POINT



# LJUBLJANA VISION 2025

## Sustainable strategies and participation with stakeholders





# Ljubljana Vision 2025

- **Ideal City**  
History
- **Metropolis**  
Quality of life, safety and tolerance
- **Environmentally friendly city**  
City interconnected with the landscape

**PROVIDING BEST SERVICE  
IMPROVING QUALITY OF LIVING**



# PRESERVING AND PROTECTING

nature, biodiversity  
and green urban areas



# PRESERVING AND PROTECTING

- **Green areas** =  $\frac{3}{4}$  of the city's surface
- **542 m<sup>2</sup>** public green area per inhabitant
- **4 Nature Parks** (13,8 % city's surface)
- **Native forests** = **46%** of the entire area of Ljubljana
- **1200 ha of special-purpose forest**
- **20 %** of Ljubljana's area has a nature protection status
- **Natura 2000 areas:** 16,5 % of the city's surface



# PRESERVING AND PROTECTING

- More than **80 ha of new green surfaces** in the city
- Degraded land into high quality **green areas**
- Citizens access green public areas within **300 m of their home**



LJUBLJANA. *For you.*

[www.greenljubljana.com](http://www.greenljubljana.com)  
[www.ljubljana.si/en](http://www.ljubljana.si/en)



City of  
Ljubljana





LJUBLJANA. *For you.*

[www.greenljubljana.com](http://www.greenljubljana.com)  
[www.ljubljana.si/en](http://www.ljubljana.si/en)



City of  
Ljubljana



# ECOLOGICAL ZONE

City centre for pedestrians and cyclists





LJUBLJANA. *For you.*

[www.greenljubljana.com](http://www.greenljubljana.com)  
[www.ljubljana.si/en](http://www.ljubljana.si/en)



City of  
Ljubljana



BEFORE

NOW



LJUBLJANA. *For you.*  
[www.greenljubljana.com](http://www.greenljubljana.com)  
[www.ljubljana.si/en](http://www.ljubljana.si/en)



City of  
Ljubljana





# Main traffic artery Slovenska Street

BEFORE

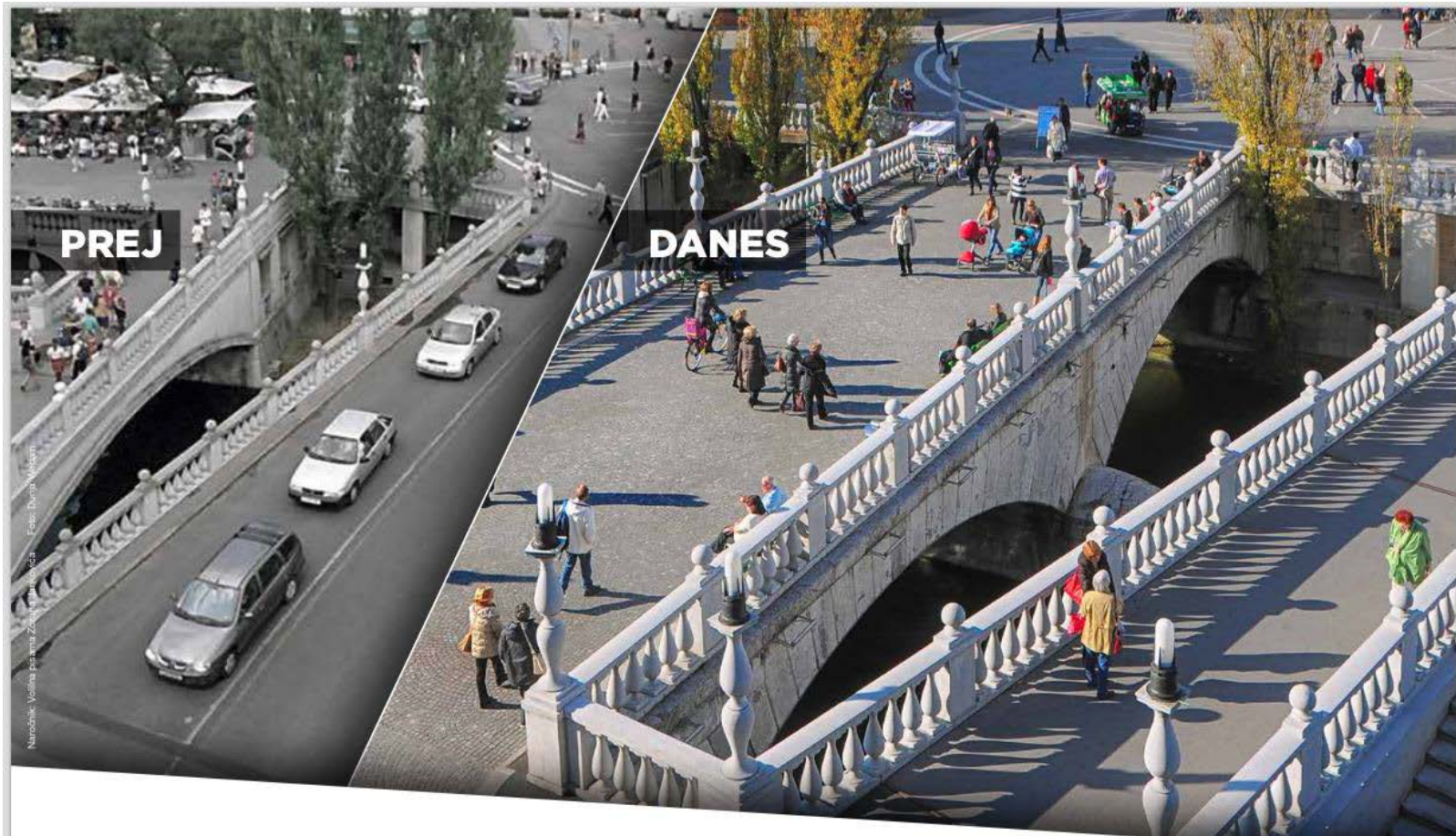


NOW



The black carbon concentrations  
decreased  
**by 70%**

# Ecological Zone



# Ecological Zone



# Ecological Zone



LJUBLJANA. *For you.*

[www.greenljubljana.com](http://www.greenljubljana.com)  
[www.ljubljana.si/en](http://www.ljubljana.si/en)



City of  
Ljubljana





LJUBLJANA. *For you.*  
[www.greenljubljana.com](http://www.greenljubljana.com)  
[www.ljubljana.si/en](http://www.ljubljana.si/en)



City of  
Ljubljana



# Refurbishment of public space connects Ecological zone with:

- the Landscape Park Tivoli, Rožnik, Šišenski hrib
- Tivoli over the green castle hill with the eastern Prealps or Posavsko hills
- the Ljubljana Marsh Landscape Park
- the Path of Remembrance and Comradeship



# WASTE MANAGEMENT

Sustainable approach



# SUSTAINABLE APPROACH TO WASTE MANAGEMENT

- the first EU capital with a Zero Waste plan
- **65%** - the largest share of separately collected waste in Europe
- by the door-to-door system to collect waste (packaging, paper, organic waste and mixed waste)
- the **Regional Waste Treatment Centre** - the largest cohesion and environmental project in the country



LJUBLJANA. *For you.*

[www.greenljubljana.com](http://www.greenljubljana.com)  
[www.ljubljana.si/en](http://www.ljubljana.si/en)



City of  
Ljubljana





# WATER



# Water source from two different ecosystems



## Protected water sources

- Ljubljana Marsh Landscape Park (Natura 2000 site) of the **16,5 % of the city's surface**
- Ljubljansko Field

## Tap water

- Untreated natural water
- Outstanding high quality
- Accessible to everyone

## Public drinking fountains



# THANK YOU



Simona Berden, M.Sc.

[www.greenljubljana.com](http://www.greenljubljana.com)  
[www.ljubljana.si](http://www.ljubljana.si)  
[green.capital@ljubljana.si](mailto:green.capital@ljubljana.si)

LJUBLJANA. *For you.*

[www.greenljubljana.com](http://www.greenljubljana.com)  
[www.ljubljana.si/en](http://www.ljubljana.si/en)



City of  
Ljubljana

